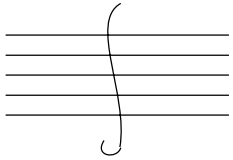


Advantage - Theory (After p. 8)

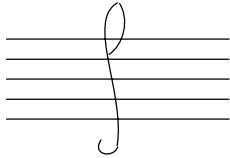
Name: _____

Draw the Treble Clef

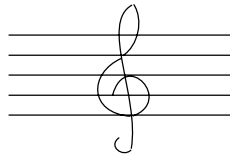
Draw the
LINE AND TAIL,



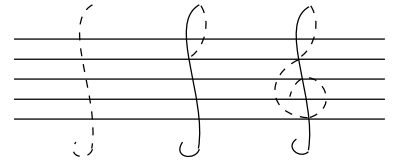
add the
TOP LOOP,



add the
BOTTOM LOOP.

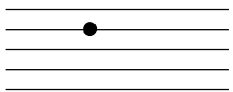


Follow the
dotted lines.



Draw the Bass Clef

Draw a solid
BLACK CIRCLE
on the 4th line,



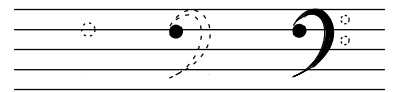
add the
CURVE,



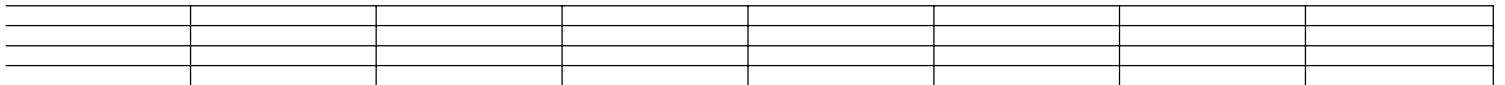
add TWO DOTS in
the 3rd and 4th spaces.



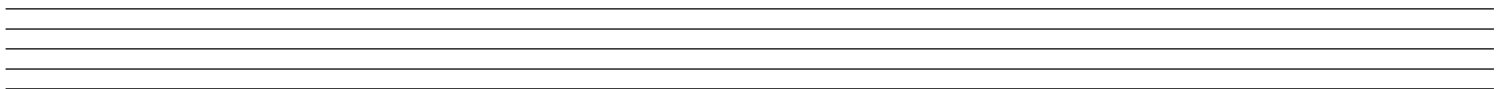
Follow the
dotted lines.



Practice drawing the clef of your instrument. Draw one in each measure.



Draw the clef of your instrument, then write the correct notes. Use whole notes.



C D A F B G E A G B