

Advantage - Scales

Oboe/Mallets

Major Scales

(One Octave)

arranged by Sandy Feldstein & Larry Clark

F-Major Scale

Musical notation for the F-Major Scale in 4/4 time. The scale is written on a single staff in treble clef. It consists of two measures: the first measure contains the ascending scale (F, G, A, B, C, D, E, F) and the second measure contains the descending scale (E, D, C, B, A, G, F). The notes are beamed together in groups of four, with slurs over each group.

Bb-Major Scale

Musical notation for the Bb-Major Scale in 4/4 time. The scale is written on a single staff in treble clef. It consists of two measures: the first measure contains the ascending scale (Bb, C, D, Eb, F, G, Ab, Bb) and the second measure contains the descending scale (Ab, G, F, Eb, D, C, Bb). The notes are beamed together in groups of four, with slurs over each group.

Eb-Major Scale

Musical notation for the Eb-Major Scale in 4/4 time. The scale is written on a single staff in treble clef. It consists of two measures: the first measure contains the ascending scale (Eb, F, G, Ab, Bb, C, Db, Eb) and the second measure contains the descending scale (Db, C, Bb, Ab, G, F, Eb). The notes are beamed together in groups of four, with slurs over each group.

Ab-Major Scale

Musical notation for the Ab-Major Scale in 4/4 time. The scale is written on a single staff in treble clef. It consists of two measures: the first measure contains the ascending scale (Ab, Bb, C, Db, Eb, F, G, Ab) and the second measure contains the descending scale (G, F, Eb, Db, C, Bb, Ab). The notes are beamed together in groups of four, with slurs over each group.

Db-Major Scale

Musical notation for the Db-Major Scale in 4/4 time. The scale is written on a single staff in treble clef. It consists of two measures: the first measure contains the ascending scale (Db, Eb, F, G, Ab, Bb, C, Db) and the second measure contains the descending scale (C, Bb, Ab, G, F, Eb, Db). The notes are beamed together in groups of four, with slurs over each group.

Gb-Major Scale

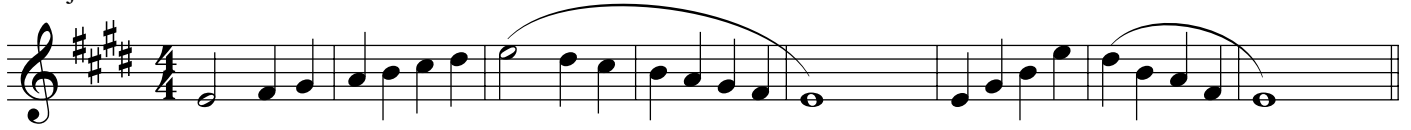
Musical notation for the Gb-Major Scale in 4/4 time. The scale is written on a single staff in treble clef. It consists of two measures: the first measure contains the ascending scale (Gb, Ab, Bb, C, Db, Eb, F, Gb) and the second measure contains the descending scale (F, Eb, Db, C, Bb, Ab, Gb). The notes are beamed together in groups of four, with slurs over each group.

B-Major Scale

Musical notation for the B-Major Scale in 4/4 time. The scale is written on a single staff in treble clef. It consists of two measures: the first measure contains the ascending scale (B, C, D, E, F, G, A, B) and the second measure contains the descending scale (A, G, F, E, D, C, B). The notes are beamed together in groups of four, with slurs over each group.

Oboe/Mallets Scales - 2

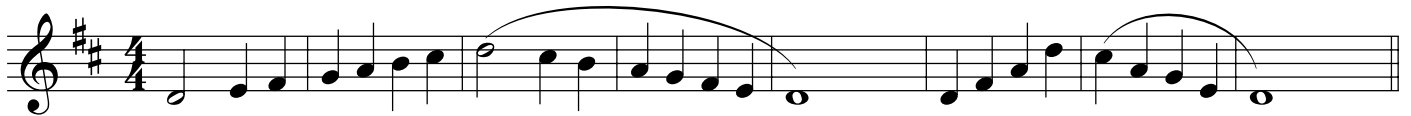
E-Major Scale



A-Major Scale



D-Major Scale



G-Major Scale



C-Major Scale



Chromatic Scale

